

High Point Market

new products

NEW PRODUCT COPY BY JENNY HEINZEN YORK, ALEX LEMONDE-GRAY, JESSE BURKHART AND TRACY BULLA. All prices are suggested retail. For more information, see **Editorial Sources** on page 80.

ACCENT FURNITURE

A&B Home	44
Acrylicore	44
Alden Parkes	46
Ambella Home Collection	46
Angelo Home	46
Arthur L. Bailey & Co.	46
Bailey Street	47
Barclay Butera Lifestyle	47
BDI	47
Beeline Home	47
Bernhardt Interiors	47
Bethel International	48
Bungalow 5	48
Cabeen Originals	48
Carolina Accents	48
Casa Bonita	50
Ceja International	50
Christopher Guy	50
Cisco Brothers	50
Classic Home	50
Coast to Coast Imports	50
Control Brand	52
Couef	52
Creative Co-Op	52
Dekayu	54
Designer Wicker	54
Designs in Wood	54
Diane Paparo Studio	54
Emerson Et Cie	56
Emissary	56
Festoni Home	56
Four Hands	56
French Heritage	56
Furniture Classics	56
Gabby	58
Gail's Accents	58
Gloster	58
Groovystuff	58
Gus	58
Habersham	58
Home Trends & Design	60
Howard Elliott	60
Ibolli	60
John Strauss Furniture	60

Jonathan Charles	60
Kalalou	60
LPK International	62
MacRae	62
Massoud	62
Miles Talbott	62
Moe's Home Collection	62
Oggi Design	64
Orient Express	64
Palm Springs Rattan	64
P.A.M.A. Furniture	64
Panama Jack	64
Pasha Home Fashions	65
Pearson	65
Pelican Reef	65
Peninsula Home	65
Polart	65
Red Egg	65
Scott Thomas	66
Seasonal Living	66
Selva	66
Serge de Troyer Collection	66
Shadow Mountain	66
Stein World	66
Stone County Ironworks	66
Summer Classics	66
Terra	66
Three Hands	66
Tracy Krohn Designs	66
Trade Winds Furniture	66
Turning House Furniture	66
Twin-Star International	66
Uttermost	67
Woodbridge Furniture Co.	67
Worlds Away	67
Zuo Modern	67

DECORATIVE ACCESSORIES

Arteriors	46
Berkeley Designs	47
Bliss Studio	48
Dale Tiffany	52
Dessau Home	54
Global Views	58
Hebi Arts	60



Imax	60
Interlude Home	60
Jozefina Art Glass	60
NCA Design	62
Prima	65
Roberta Schilling Collection	65
Roma Living	66
Tara Shaw Maison	66
Tozai Home	66

GARDEN DÉCOR

Orlandi Statuary	64
------------------	----

LAMPS AND LIGHTING

2b Design	44
26th & Soho	44
Adesso	44
Artisan House	47
Cal Lighting	48
Chelsea House	50
Crestview Collection	52
Currey & Company	52
Flambeau Lighting	56
Frederick Cooper	56
Guildmaster	58
Lazy Susan	61
Leif Petersen	62
Mastercraft	62
Murray Feiss	62
Nova	63
Old South Accents	64
Pacific Coast Lighting	64
Port 68	65
Raschella Home Décor	65

Visual Comfort & Co.	67
Wildwood	67

PERMANENT BOTANICALS

Allstate Floral & Craft	46
Artistry in Silk	47
Bougainvillea	48
Distinctive Designs	54
NDI	62
New Growth Designs	62
Treemasters	66

RUGS

AMS Imports	46
Capel	48
Creative Touch	52
Feizy	56
Jaunty	60
Kalaty Rug	61
Karastan	61
KAS Rugs	61
Liberty Rugs	62
Liora Manné	62
Loloi Rugs	62
M.A. Trading	62
Momeni	62
Noble House	62
Nomadic Trading	63
Rizzy Home	65
Safavieh	66
Shaw	66
Surya	66
Trans-Ocean	66
V Rugs and Home	67
Villa Home Collection	67

SOFT GOODS

Amity Home	46
Auskin	47
C&F Enterprises	50
Company C	50
Corona Décor	52
Eastern Accents	54
Elite Leather	54

Kevin O'Brien Studio	61
Kimlor	61
Libeco Home	62
Michaelian Home	62
Prints Charming	65
Rennie & Rose	65
The Rug Market	66
Textillery Weavers	66

TABLETOP

Montes Doggett	62
----------------	----

WALL DÉCOR

Affordable Art by Autruche	46
Art Trends	46
Bassett Mirror Co.	47
Classy Art	50
Cooper Classics	52
Dorya	54
H. Hal Kramer	58
Hang-Time Designs	60
Interdecorations	60
Itinerant Studio	60
John Richard	60
Kevin McPherrin Gallery	61
Kichler	61
Lauren Lachance Collection	61
Linda Donohue Fine Art	62
Lorna Dewey of London	62
Majestic Mirror	62
Mercana	62
Owen Mortensen	64
Palecek	64
Paragon	65
The Phillips Collection	65
The Portfolio Collection	65
Prestige Arts	65
Propac Images	65
Regina Andrew	65
Rosenbaum Fine Art	66
Tapestries, Ltd.	66
W. King Ambler	67



2b Design
Part of the Beyt Collection, the Salib table lamp features an ornately curved X body in wrought iron with a calming pastel pink shade.



26th & Soho
Rich wood tones envelop the Elmer table lamp, topped with a cream linen shade and detailed with a beaded pull chain and custom finial (\$360).



A&B Home
The base of the Iron ottoman is intricately rendered and finished with a weathered look. The piece is designed for indoor or (covered) outdoor use (\$499).



Acrylicore
Apple green silk covers the dramatic J'Adore seating collection, spotlighting a swooping cast acrylic frame.



Adesso
A new floor lamp exudes classic design with its ornate footing and handled urn details in bronze and brown.

We Put The Accent On Furniture.



SEE US IN HIGH POINT FOR
INCREDIBLE MARKET SPECIALS!



- Hand-painted, wood and wood veneers
- Product categories include seating, chests, tables, media centers and more
- Quick shipping available

High Point: IHFC Space C754

Coast to Coast Imports, LLC P.O. Box 2157, Memphis, TN 38101
FAX your order to 901.946.8997 or CONTACT us at 901.946.8990
sales@ctoconline.com

www.ctoconline.com

NEW PRODUCTS HIGH POINT



Affordable Art by Atruche
Purple Flowers is an original canvas series of five pieces joined by metal rods (\$250).



AMS Imports
Shaded Sands is part of a new rug collection from Peru, showcasing 100% llama wool that is flat-woven by hand. Available customized in more than 90 colors, the rug is reversible (\$2,600, 6x9).



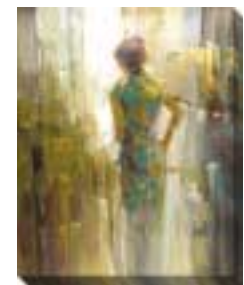
Alden Parkes
A weathered driftwood finish is applied to solid acacia to create the Suffolk dining chair, which coordinates with a table and sideboard (\$1,167).



Angelo Home
The Sutton arm chair, shown in a modern turquoise damask cover; spotlights tapered wood legs in a walnut finish (\$299).



Allstate Floral & Craft
A birch tree bursts with golden foliage in this 7-foot tree design in a grainy wood container (\$310).



Art Trends
Originally painted in oil, Sunday Afternoon debuts as a moody print replicating each brush stroke and textured with gold leaf.



Ambella Home Collection
The Voranado cabinet debuts, made of solid mahogany with reverse-painted gold details on antique mirror.



Arteriors
A shiny polished nickel finish adds a contemporary edge to the slightly rusticated body shape of this handled rectangular vase.



Amity Home
Pillows and coverlets in the Tudor Collection are made of 100% dupioni silk and are available in teal, gold, pink and ivory.



Arthur Bailey & Co.
The Buckhead upholstered headboard showcases a crushed velvet cover and deep button tufting. The design is also available as a full bed and in a variety of fabrics and leathers (\$1,160, queen headboard).



Artisan House

The Interplay chrome table lamp is part of the new C. Jeré Collection of lighting designs, each made of polished brass,

plated steel, chrome or brushed steel.



Bassett Mirror Co.

Audrey is a lithograph under glass featuring three photos in a film-strip format of legendary actress Audrey Hepburn (\$199).



Artistry in Silk

Hydrangeas, peonies, berries and salal leaves are arranged in an orange pottery vase to create a small, autumnal accent (\$125).



BDI

The Eras TV stand offers a sleek, contemporary vibe with its walnut and chocolate finishes, adjustable shelves and removable back panels (\$2,145).



Auskin

Tibetan lambskins are used to handcraft the Frise Fibre pillows, measuring 16 inches square and available in ivory, chocolate and black (\$790 each).



Beeline Home

The Tray Chic ottoman cleverly functions as a cocktail table, ottoman and removable tray, with tailored details such as hand-turned legs, button tufting and shagreen-patterned tray upping the style quotient.



Bailey Street

A shiny black lacquer base is decorated with gold accents and topped with a leopard-print fabric on the new Selva bench (\$248).



Berkeley Designs

From the Classic Nautical Collection, the J Class Sailboat model accurately re-creates a traditional

boat design with intricate hand-made details (\$350).



Barclay Butera Lifestyle

A refined rustic style defines the new Pacifica night table in walnut finish, part of the Montecito Collection.



Bernhardt Interiors

A shiny metal frame and metallic "snakeskin" leather lend a sexy edge to the Gustav side chair debuting this season.

COAST TO COAST IMPORTS, LLC™

Jadu ACCENTS™

...Making The Magic Happen Again!

#39520



#39529



#39531



#39513



SEE US IN HIGH POINT FOR **INCREDIBLE MARKET SPECIALS!**

- Beautiful exotic and reclaimed wood from India
- In stock program delivered when you want it
- Priced to sell

High Point: IHFC Space C754

Coast to Coast Imports, LLC P.O. Box 2157, Memphis, TN 38101
FAX your order to 901.946.8997 or CONTACT us at 901.946.8990
sales@ctoconline.com

www.ctoconline.com

NEW PRODUCTS HIGH POINT



Bethel International
The new Paris Collection includes a dramatic round mirrored table, accentuated with a warm silver finish on the wood frame.



Bliss Studio
The heavily distressed Portuguese wall bracket is intricately carved and measures 28 inches tall.



Bougainvillea
Bougainvillea's latest preserved floral design adds a royal touch, with red roses and hydrangeas arranged in a wooden antique gold crown.



Bungalow 5
The Marie side cabinet features an elegant antique mirrored body with beveled mirror mosaic details (\$1,235).



C&F Enterprises
Carrienne is romantically rendered using bold florals and a reversible stripe pattern (\$4, napkin; \$9, placemat).



Cabeen Originals
The Northshore Hills line, made from American cherry and black walnut, exhibits organic elegance and exquisite detailing.



Cal Lighting
Standing 30 inches high in a dark bronze finish, the traditional Laurel resin lamp is topped with a white pleated shade (\$162).



Capel Rugs
Beach Sisal is from the Creative Concepts program, which allows customers to choose from nine indoor-outdoor base carpets, 120 woven indoor-outdoor border fabrics, and a range of shapes and sizes (\$399, 5x8).



Carolina Accents
Designed by Mario Ponce and walnut-finished in a combination of metal and wood, the Oliver end table projects transitional style (\$159).

3 New Collections to Debut at High Point!

ColorPOST
*with Connie*TM

Color stories designed to sell at retail – today!

available exclusively from

imaxTM
WORLDWIDE HOME

Meet Connie Post in High Point!

Connie will be in the IMAX High Point showrooms from 4–6 pm on Monday and Tuesday, October 24th and 25th. Join her for wine and cheese and pick up your ColorPOST handout to guide you in your market buys.

IHFC – Wrenn Wing – W446

For more information, visit www.imaxcorp.com or call Customer Service at 800-882-4629.

Follow us on Facebook and Twitter for exclusive market updates and specials!

NEW PRODUCTS HIGH POINT



Casa Bonita
Handcrafted and hand-painted, the Madonna buffet displays an antiqued façade (\$4,350).



Ceja International
Manufactured in Italy, a table couples Nero Marquina marble culled from Spain with a high-gloss finish.



Chelsea House
Delicate handles are set to the edge of a new table lamp spotlighting a green-yellow bicolor glaze and off-white linen shade.



Christopher Guy
Supported by saber legs and the signature "Chris-X" leg design, a Coco-finished, hand-carved chair from the Mademoiselle Collection exemplifies graceful detail.



Cisco Brothers
The Alessandra chair; designed by Cisco Pinedo, uses Boris Nero leather to sophisticated effect (\$1,895).



Classic Home
The Entryway storage bench merges a whitewashed exterior with a reclaimed pine construction, from the Windsor Collection (\$1,598).




Classy Art
Measuring 22x26 inches, a traditional print is mounted under glass with a 3-inch MDF, scratch-resistant frame (\$39).





Coast to Coast Imports
The antique blue finish on the metal shows off the reclaimed wood tabletops on this set of nesting tables from the Jadu Collection.




Company C
Evoking crisply striped awnings, soothing stripes of blues, aqua and light gray are formed by grosgrain ribbon stitched down the front of the Veranda stripe pillow (\$110).




Living Colors

IHFC Hamilton 404





Atlanta
770.298.9571
14111. Avenue
www.emissary.com • F: 770.298.9500 • R: 770.298.9597 • T: 770.298.9557

High Point
703.922.0045

Dallas
972.991.1000
7400. East
770.298.9500

New York
212.751.7500
751.7500

NEW PRODUCTS HIGH POINT



Control Brand
The wool-upholstered Teddy club chair offers '60s mod appeal in cheerful sky blue (\$2,280).



Cooper Classics
With a heavily aged finish of whitewash and rust, the Amelia clock tells time in Parisian style (\$149).



Corona Decor
The Daisy Flora pillow, measuring 19x19 inches, reveals its natural inspiration with tapestry panels woven in France, welt-cord edge and velvet backing (\$120).



Couef
The Rex ottoman combines charcoal velvet upholstery, a pull-out shelf in black oak ghibli wood veneer and brushed nickel nail-heads (\$1,460).



Creative Co-Op
From the Casual Country Collection, a reclaimed pine wood pantry spotlights cottage chic (\$4,600).



Creative Touch
A new rug from the Modern Collection is hand-knotted in India of wool and silk (\$110 per square foot).



Crestview Collection
The Ellis table lamp stands 32 inches high, featuring traditional detailing and a reclaimed wood finish (\$50).



Currey & Company
Six lights encircle the 30x44-inch Palm Beach chandelier, made of wrought iron, wood and arurog.



Dale Tiffany
The Feathers Art Glass Collection includes the Broad vase, tall bottle vase and Ruffle bowl.

MIDWEST-CBK
mwcbk.com 800-394-4225

Connect with us!
Facebook Twitter /Midwest-CBK

NEW PRODUCTS HIGH POINT



Dekayu
The versatile S side table, made from solid recycled teak, touts modern, multi-function design, described as "adult Legos" by the company.



Designer Wicker
Part of a larger collection that includes seating and dining, Boathouse Cottage tables are crafted of wood reclaimed from dismantled boats.



Designs in Wood
The Walnut desk in distressed Peacock blue features a hand-planed top and tapered legs, part of the Farm Tables Collection (\$1,700).



Dessau Home
An urn-shaped vase from the British Trophy Collection spotlights a solid brass body and nickel-plated finish (\$175).



Diane Paparo Studio
Showcasing a hand-carved modern pattern in a curved back, the Vine swivel barstool in bur-lap is available in various colors and wood stains.

Distinctive Designs



From the Minimalist Tropical Collection, a green Cymbidium orchid plant in an etched bronze bowl is designed by Emma Hoffmann (\$99).



Dorya
The Fan mirror, part of the Contemporain Collection, is finished in Modern Silver and designed by Megan Perry (\$5,100).



Eastern Accents
From the Niche Bedding & Living line, the chic Astaire bedding set exudes contained glamour in soft shades of cream and coffee.



Elite Leather
The Enchantress pillow features a delicate lattice design reminiscent of Asian influence, seen in the subdued Truffle colorway (\$100).



Home influences
20-24 Jan. 2012
Paris Nord Villepinte
www.maison-objet.com
The show for home-fashion
Trade only.
Visitors: Promoselons USA
Tel. +1-212-565-0404
pbezin@promoselonsusa.com



promoselons, all the world's home... (unreadable)

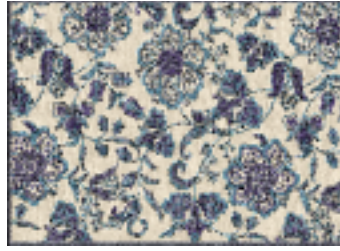
NEW PRODUCTS HIGH POINT



Emerson Et Cie
Organic, modern design interprets simplified French-inspired curved legs in the Natalie console table, made of Burma teak.



Emissary
The ceramic Crisscross garden stools designed by Arthur Wang display a classic lattice design and are available in four colors (\$240 each).



Feizy
Power-loomed of faux silk in a high-low construction, this lush Turkish rug bears a traditional floral design in shades of navy, gray and teal.



Festoni Home
Tangerine linen highlights the retro-inspired curves of the Kirby chair, completed with nickel nailheads and dark walnut-stained legs (\$325).



Flambeau Lighting
The Soniat table lamp gets regal treatment with gold leaf ionic capital and mounting topping a crimson column decorated with silver leaf fleur de lis (\$375).

23RD ANNUAL ARTS AWARDS FINALISTS

Distinguished as the only event of its kind in the country, the ARTS Awards pay tribute to the talents of manufacturers, retailers, product designers and sales representatives in the decorative accessories industry.

Winners will be announced at the ARTS Awards gala in Dallas on Saturday, January 21, 2012.

<p>MANUFACTURERS</p> <p>ACCENT FURNITURE Baker - Chicago, IL Bullfinch, Inc. - Springfield, MA Bullfinch - Broadwater, N.C. Phillips Collection - High Point, N.C. Dale Ward - Memphis, Tenn.</p> <p>AREA RUGS Julian Rega, Inc. - Marietta, Ga. Bafarbi - Fort Washington, N.Y. Perry, Inc. - Collins, Ga.</p> <p>DECORATIVE ACCESSORIES A&B Home - Brevard County, Calif. Crestline Co.-Op - Memphis, Tenn. PORT 66 - Chicago, IL Dorling Industries - Kaysville, Pa.</p> <p>HOME TEXTILES Home Treasures - Houston, Texas Lacelle Dodge - Smyrna, Ga. Pera Pera at Home - Hollywood, Calif. Textile Weavers - Bloomington, Ind.</p> <p>LIGHTING FIXTURES Carbide Lighting - City of Industry, Calif. Hirley Lighting, Inc. - Cleveland, Ohio Hubbards Forge - Castleton, Vt. Solonville - Pittsburgh, N.Y.</p> <p>OUTDOOR LIVING Arts and Outdoors North America, LLC - Midway, Texas Bridgeway Trading Company - Atlanta, Ga. Peregrine Home & Garden - Vacaville, Calif. Lafel Rega - Dallas, Texas</p> <p>PERMANENT FLOOR American Best - Garland, Texas Artistry in Silk - Lawrenceville, Ga. NDI - Brenton, Ala. The Ivy Child, Inc. - Laguna Hills, Calif.</p> <p>PORTABLE LAMPS Barbara Congress Lamp - St. Louis City, Mo. Curry & Company - Atlanta, Ga. Seaween A Way of Light - Larchmont, N.Y. The Ironiers Company - Atlanta, Ga. Worlds Away - Memphis, Tenn.</p> <p>TABLETOP Beadie Ball Collection - Harvey, La. Chalkboard China - Dallas, Texas T&B, Ltd. - Chicago, IL The OG Collection - Omaha, Neb. Vogelwood House - El Paso, Texas</p>	<p>WALL DÉCOR John Richard - Greenwood, Miss. Lafin Art - Santa Fe Springs, Calif. Peters Images - Alhambra, Ala. Richard's Home Collection - Brentwood, Miss. Woodover Art Group - Clearwater, Fla.</p> <p>SALES REPRESENTATIVES</p> <p>NATIONAL/KEY ACCOUNTS Anne Jarboe - Jorgensen Heather Rowley - Taggart on Top John J. McDaniel - JJE Group/ Revolution Hardware</p> <p>EAST/ATLANTIC Jennifer Johnson - Jorgensen Bobbie Carter - Southern Accents by Bobbi Elwood - Fine Art Lamps</p> <p>MIDWEST/SOUTHWEST Cindy Rogers - CSE Associates Dorinda Roberts - C&D Richard Allen - Richard Allen & Associates, LLC</p> <p>WEST Angie Zahrtfeld - Homestyle Michelle Korduba - Riverside in Decor Whitney Long - California Marketing Associates</p> <p>PRODUCT DESIGNERS J. Michael Sander - Bullfinch, Inc. Jawn Phillips - Phillips Collective Lara Reed - Arts and Outdoors North America, LLC Kasid Weber - Alden Gray Home, Inc. Tom Caldwell - Curry & Company</p> <p>RETAILERS</p> <p>HOME ACCENT STORE B&B Interiors - Knoxville, Tenn. The French Market - Florence, Ala. The Miller Home - Shafter, Calif.</p> <p>Midwest/Southwest Clarke & Belle's - Marshall, Texas B&C - Dallas, Texas Katie Hertz - Fort Worth, Tex.</p> <p>West Belle Case - Portland, Ore. Barbarology - San Jose, Calif. J&K Home, LLC - San Francisco, Calif.</p>	<p>FURNITURE STORES Lush's Home Furnishings - Torrance, Texas Suzette Home - La Jolla, Calif. The Arrangement Decorative Interiors - Dallas, Texas</p> <p>INTERNATIONAL Cora Paludo - Toronto City, Ontario Design Lighting - Surrey, BC, Canada Luminare & Co. Inc. - Level, QC, Canada Spectra Lighting Group, Inc. - Scotts Domings, Distributor Specialist Vaughan Electrical Supply Co. Ltd. - Woodbridge, Ontario, Canada</p> <p>LIGHTING SHOWROOM B&B Interiors Cleveland Lighting - Lynnwood, B.C. Blomberg Distributors Lighting & Home Furnishings - Cora Paludo, NY Southern Lighting Gallery, Inc. - Augusta, Ga.</p> <p>Midwest/Southwest Lighting by Pat - Memphis, IL Pavise Lighting - Superior, Texas Southern Lights - Fortville, Wis.</p> <p>West Hortense Lighting - Scottsdale, Ariz. Light Bulbs, Inc./Lighting - Costa Mesa, Calif. Valley Light Gallery - Scottsdale, Ariz.</p> <p>FRINGE STORE Colorado Villa Home - Parkers, Colo. Steven Jeffrey Home - Irvine, Texas The Mercantile - Atlanta, Ga.</p> <p>ACADEMY OF ACHIEVEMENT Allen H. Polanski - PALMCO</p> <p>FOR MORE INFORMATION www.dallasartsawards.com/artawards www.dallasartsawards.com</p>
---	--	---



Four Hands
The Union Jack cube puff continues the recent British design revival with the country's flag playfully adorning all sides (\$195).



Frederick Cooper
From the Larry Laslo Collection, classic design gets an unexpected twist with this lamp's unique body design.



French Heritage
Burnished gold accents look divine against the Rochelle console's ebony hand-rubbed finish with pale painted butterflies.



Furniture Classics
The Marie Claire carved commode revisits Louis XV-era provincial design in solid mahogany with low-relief carvings on the drawer fronts, shown in rustic pecan finish.



NEW PRODUCTS HIGH POINT



Gabby
Handcrafted aged iron framework on the Drake mirror was inspired by the window panes of an 18th century schoolhouse.



Gail's Accents
From the Ivey Collection, an oak veneer console in a combination of weathered and scrubbed oak finishes features antique glaze mirrors with hand-forged metal grating on its two doors (\$699).



Global Views
A seashell-inspired swirl design lends a fluid, organic feel to this art glass platter.



Gloster
The Pacific high-back, deep-seat swivel rocker showcases wedge-shaped arms and espresso wicker, dark-stained mahogany and latte-colored fabric.



Groovystuff
Designed by Appalachian State University student Michelle Walbert, the Deschutes bench defines rugged sophistication in reclaimed teak (\$1,249).



Guildmaster
Perched atop a Bruge finish wood base, three decorative floral balls in gray-finished metal climb to a natural linen bell shade with flower and button details (\$419).



Gus
The multifunctional Lightbox operates as a floor lamp, stool or accent table, broadening the usability of modern design (\$325).



H. Hal Kramer
From the Antiqued Collection, hand-aged antique reproduction miniature botanical prints give time-honored glimpses into nature (\$150, set of four).



Habersham
Inspired by the curves and lines of the seashore, the North Sea chest from the American Treasures Collection features clean lines paired with a flowing design on the chest's front.

The Market Starts Here!

SHOWPLACE

Come Savor the Social Side of Showplace

Sunset on 3
3rd Floor Balcony

Music & Bar in Atrium
1st Floor, Atrium

Afternoon Socials
1st-3rd Floors

October 22-26



www.showplace-highpoint.com

Prices still starting at

P PROPAC
images

\$9 ea.



Your Choice For Affordable Wall Decor!

HIGH POINT LAS VEGAS ATLANTA LOS ANGELES

1292 Wagner Drive, Albertville, AL 35950
al129@propacimages.com

Phone: 800-977-6723
www.propacimages.com

NEW PRODUCTS HIGH POINT



Hang-Time Designs

Made in America, Rainbow Seekers wall clock from the Fine Art Collection features fantastical art by Dlynn direct-printed on acrylic (\$149).



Hebi Arts

Rose petals are re-imagined in these uniquely shaped high-gloss vases in striated dark red.



Home Trends & Design

From the Wine Crate Collection, this pair of trunks offers a taste of old Paris with aged wood and rustic hardware (\$525, set of two).



Howard Elliott

The Universal bench in Howard Elliott's new Bengal design faux leather adds an exotic touch (\$290).



Ibolili

Tribal ethos exudes from the hair-on hide leather stool with reclaimed teak legs made by artisans in Indonesia (\$497).



Imax

Kelley flower vases from the Handcrafted Collection feature hand-created, flower-like shapes applied to each by a ceramist lending vibrant texture (\$35 to \$50).



Interdecorations

Blossom in Blue wall décor, designed by Mariska Meijers, depicts cherry blossoms springing from a traditional blue-and-white vase in soft pastel hues of blue, white and green (\$269).



Interlude Home

The glass Lorna Gourds in Cloudy Cream finish have stem and ribbed body details that lend a realistic sense to these tabletop items (\$299, set of three).



Itinerant Studio

Boothbay from the Vintage New England Collection is a photographic encaustic, meaning beeswax was painted over the photograph printed on bamboo fiber paper (\$700, original/\$240, print).



Jaunty

Hand-tufted in India of wool, this rug from the Sonoma Collection presents a textured look and feel with its cut-and-loop pile and giraffe-like design (\$549, 5x8).



John-Richard

Titled "Dancer in Red," this oil painting by artist Josiah utilizes broad brush strokes and a focus on lighting.



John Strauss Furniture

The Sheridan Road buffet blends modern and rustic styling in a Lake Shore Drive Gray finish on white oak (\$3,670).



Jonathan Charles

From the Transitional Collection, the Shelf and Etagere employs streamlined minimalist design then adds regal zest with a distressed gilded finish and hand-painted gold borders.



Jozefina Art Glass

Designed by Jozef Jankowski, the handcrafted Carnival blends caramel beige and berry amethyst to effect abstract elegance (\$169).



Kalalou

Intricately patterned hammered brass dresses the drawer fronts of this five-drawer console design.

You may now view Cal Lighting's exquisite hand-blown glass table lamps.

highpoint MARKET
III C Design Wing - U-309

CA
Lighting & Accessories



Don't be left out - Cash Balloons starting with your \$500 order



3625 E Philadelphia St. Ontario, CA 91761 Tel: 800.321.6677
Fax: 800.814.4946 www.CalLighting.com Sales@calighting.com



Kalaty Rug

New from the Nova Collection, a series of tone-on-tone rugs are handcrafted in a Lori-Loom weave with a loop-and-pile technique using wool and faux silk yarns (\$990, 6x9).



Kichler

Traditional scroll accents are carved and finished in rich gold to stand out against the ebony frame of this new 30-inch square mirror (\$447).



Kimlor

Made of 100% cotton, a deer silhouette is depicted on a pillow from the Browning Collection.



Lauren Lachance Collection

An image of a pressed Brassolaelia orchid is scanned onto archival, acid-free watercolor paper, then signed and numbered (\$900).



Lazy Susan

Rusticated iron slats are assembled with hammered rivet nails on the Colossal Fortress pendant lamp, evoking a distinctly medieval vibe (\$500).



Karastan

The Monte Vista Fog rug, part of the Carmel Collection, showcases a patchwork of overlapping flowers, vines, trellises and borders in rich earth tones (\$499, 5x8).



KAS Rugs

The Sparta Collection is a series of rugs featuring large-scale tropical and floral designs, all rendered in 100% wool with vegetable dye appearance and abrash shading for extra dimension (\$499, 6x9).



Kevin McPherrin Gallery

Aqua Girl by artist Ngurah is a photo-realistic original oil on canvas measuring 40x60 inches (\$6,200).



Kevin O'Brien Studio

Traditional cameo-shaped medallions of silk velvet are laced together with a fretwork of metallic embroidery against a linen ground fabric on the new Frames pillow (\$265).

Enhance Your Retail Displays. Create A Lifestyle.

We are the industry's best wholesale resource for
realistic artificial display foods and drinks! Over 800 items!



Below is a sampling of successful multi store retailers who have increased their furniture and fabric protections sales, *this year*, using Humphrey's Farms display foods.

Carl's Patio
Kane's Furniture
Gardner White
American Furniture Warehouse
Jerome's Furniture
El Dorado Furniture

Join the list today!

See us in High Point at Showplace Booth 1511.

Humphrey's Farm

www.HumphreysFarm.com

NEW PRODUCTS HIGH POINT



Leif Petersen
Glo pendants are made of blown glass with gold, silver and clear accents (\$1,200 to \$1,800 each).



Libeco Home
The Flagstaff blanket debuts this market in pure Belgian linen, offered in Plum stripe and Café Noir stripe (\$434 to \$860).



Liberty Rugs
The Adonia rug is a hand-knotted, 100% wool design in beige and sky blue (\$6,500, 9x12).



Linda Donohue Fine Art
Crystal Bay is an atmospheric, impressionist-inspired original acrylic painting on canvas, measuring 20 inches square (\$399).



Liora Manné
The Disco rug collection is made using the signature Lamontage process and is available in several vivid color palettes.



Lite Source
The LED table lamp showcases a chrome-finished metal body with a clear acrylic disc shade.



Loloi Rugs
New rug collections include Royce, a series of five textured designs, including flat bands, stitched braids and rolled rows, made of felted wool and available in custom sizes and six color palettes.



Lorna Dewey of London
Yew burlwood is pieced together to create the Warlingham round mirror, measuring 42 inches across (\$2,700).



LPK International
Contrasting styles are showcased in the Digitech end table, marrying whimsical curves, Eastern-inspired legs and a shiny white lacquer finish with a pop of color in the drawer (\$149).



M.A. Trading
Pieces of vintage rugs are restored, over-dyed and hand-stitched together to create the Renaissance rug collection (\$2,546, 5x8).



MacRae
From the McAlpine Collection, the Fern Knuckle chaise offers finely tailored styling with a whimsical slant.



Majestic Mirror
A shiny finish adorns the Chinese Red Lacquer round mirror, measuring 36 inches across.



Massoud
The Tuscan chair combines aqua embossed croc leather, a kilim rug-inspired back cover and tight nailhead details (\$1,199).



Mastercraft
An antique silver mercury glass base is topped with a chrome-trimmed white shade and accented with a chrome base and finial (\$49).



Mercana
This green floral print is accentuated by a mirror-mat treatment, adding depth to the contemporary design, also available in orange and purple (\$150).



Michaelian Home
On-trend zigzag patterning in reds, pinks and greens adorns this handmade needlepoint pillow, accented with ball fringe and velvet backing (\$180).



Miles Talbott
From the Shabby Chic Collection, the Marlow chair has a tailored skirt but still offers laidback comfort, shown in an eggshell-colored upholstery (\$1,830).



Moe's Home Collection
The Dallin screen is made of teak and finished in dark ebony brown (\$675).



Momeni
New rugs in the Zen Collection include this oversized Aubergine floral pattern, made of 100% wool with bamboo silk accents (\$739, 5x8).



Montes Doggett
New high-fired ceramic tabletop designs include the Bright, New and Brick bowls, all handmade in Peru and dishwasher-, microwave- and oven-safe (\$85 each).



Murray Feiss
Long curves and stubbed ends provide imperfect beauty inspiration in this resin and steel design lamp in Firenze Gold finish from the Brielle Collection.



NCA Design
Crafted of Paulownia wood, the Heart of Leaves vases juxtapose delicate imagery against a boldly hued backdrop (\$390 to \$490).



NDI
Lush peonies bloom profusely in a minimalist rectangular glass vase from NDI (\$260).




New Growth Designs
Mixed succulents are grouped in a bronze-glazed porcelain bowl, also offered in a natural terra cotta container (\$525).



Noble House
Noble House's hand-tufted, wool pile rug boasts a contemporary spiral motif, part of the Omega Collection (\$499, 5x8).

ORLANDI STATUARY
CELEBRATING 100 YEARS!



Visit us in High Point
Building: IHFC Space #: M324

See our Garden Fiber Stone made with lightweight fiberglass that looks as authentic as stone.

info@orlandistatuary.com www.orlandistatuary.com P: 773.489.0303

NEW PRODUCTS HIGH POINT



Nomadic Trading

Vintage rug swatches are over-dyed and pieced together to create a new patchwork-patterned design.



Nova

The Matrimony Reclining table lamps offer a modern interpretation of a wedding band in a gold or silver chrome finish with brown or white linen shades.



Oggi Design

The Configaro coffee table is a study in contemporary styling, featuring a glossy white table top and aluminum chrome legs (\$1,975).



Old South Accents

A buffet lamp gives a nod to traditional styling with classical detailing, distressed neutral finish and tall linen shade (\$99).



Orient Express

Part of the Regency Collection, the new Tapestry ottoman is created from a wool rug complemented by espresso turned legs (\$990).



Orlandi Statuary

Tuscan styling is evident in the Heartford urn, shown in Sandstone finish, which is made from a mixture of sand and stones reinforced with a fiberglass backing (\$179).



Owen Mortensen

Modern art meets Mother Nature in Window, as a "window" etched into three sycamore leaves reveals the intricate veining (\$400).



Pacific Coast Lighting

Felt flowers float across a crisp shade in a fun, contemporary ceramic lamp, which is made in the USA (\$248).



Palecek

Elaborately detailed floral medallions embellish the Carved Tunis wall décor from Palecek.



Palm Springs Rattan

Pineapple motifs, fresh colorways and shutter detailing instill a charming cottage feel to new accent pieces.



P.A.M.A. Furniture

Shown in Tosca finish, the elegantly carved chaise is available with optional tufting (\$2,638).



Panama Jack

Made from renewable acacia wood, the Eco Jack Steamer Trunk bar features a fold-out bar and slatted shelves.

Where Artistry Meets Lifestyle.

Delivering heirloom furniture that is beautiful, functional and long lasting. Crafted in conjunction with our passion for eco-friendly, sustainable furnishings and home décor.




SUITES AT MARKET SQUARE G-5035
Rt. Box 368 | Pompano Beach, FL 33061
phone: 954.941.2388 | fax: 954.337.0997
sales@ToucanTrading.com | www.ToucanTrading.com



TOUCAN
FINE FURNITURE & ACCESSORIES

EarthShare Friends of the Earth GreenSource Twitter Facebook LinkedIn



Paragon
Paragon's architectural medallion wall art spotlights a lion-mounted door knocker.



The Phillips Collection
Colorful and contemporary, Parasol is constructed of a light canvas on a metal frame and is available in illuminated pieces.



Prima
Desert Drip is crafted of hand-blown, hand-painted glass made from recycled bottles (\$249, pair).



Raschella Home Décor
A rubbed-through silver finish covers the porcelain base on this new contemporary table lamp (\$250).



Rennie & Rose
The Holly pillow offers a fresh take on a holiday pattern, made using a woven cotton/poly tapestry fabric.



Pasha Home Fashions
Gleaming nailhead trim accentuates the masculine appeal of Pasha's classic wing chair.



Polart
A traditional design updated for modern interiors, this new chair's ornate detailing celebrates time-honored elegance (\$286).



Prints Charming
A pillow from the Opera Ticket Collection is inspired by rare antique theater tickets (\$185 to \$245).



Red Egg
Bamboo motifs and a dark brown finish adorn the new classically Asian-inspired end table.



Rizzy Home
A contemporized damask adorns the new Volare rug, hand-tufted in India of 100% wool (\$439, 5x8).



Pearson
Covered in 100% worsted wool, the retro-inspired sofa features low carved feet, wide track arms and included throw pillows (\$7,653).



Port 68
The Bainbridge bronze lamp, standing 21 inches high, is rendered in hand-applied gold and silver leaf on art glass tile.



Propac Images
Apperception is an abstract sepia print mounted on a silver box frame and layered with a clear glaze (\$132 to \$152).



Regina Andrew
Hand-braided brass is used to create the form of the Scallop mirror; reinterpreting the sunburst style (\$850).



Roberta Schilling Collection
Three pieces of handmade glass by Brazilian artist Cristina Duarte are nested together to create a flower-like effect.



Pelican Reef
Panama Jack has partnered with Pelican Reef to debut the Island Breeze Collection of outdoor furniture, including armchairs, chaises, barstools and more.



The Portfolio Collection
A limited-edition print from Kathy Montgomery is available in three sizes and various frames.



Peninsula Home
Bench-made in the USA, the Jordan chair in Westhove Begonia boasts dramatic lines (\$2,195).



Prestige Arts
Careful brushstrokes bring out the detail in the lush trees and motion-filled birds of Blue Bayou.

heimtextil

January 11 - 14, 2012
Frankfurt, Germany

More prospects for the industry:
Ideas Crossing

- Suppliers from all over the world
- Sustainability in Interior design
- New fashion labels
- Future themes of the industry
- Pioneering trends

Heimtextil is the leading international trade show for textile interior design.
For more information visit:
www.heimtextil.messefrankfurt.com

Info@usa.messefrankfurt.com
Tel. +1770.984.8016

messe frankfurt

NEW PRODUCTS HIGH POINT



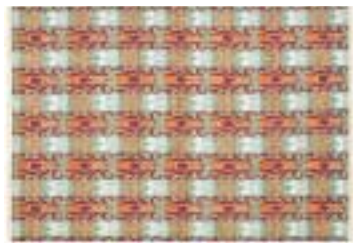
Roma Living
The new Lavo photo frame collection combines organic contours and a high-gloss black finish, available in four sizes.



Rosenbaum Fine Art
Blue Squiggle is an original mixed media design on paper, done by artist Robert Robinson (\$8,717).



The Rug Market
A repeating floral pattern is hooked in rose and gold polypropylene and acrylic on the new Aurora rug (\$299, 5x8).



Safavieh
The David Easton Collection is expanded to include Hyderabad Garden, made using a special hand-knot Soumak weave to recreate the look of handmade ikat textiles (\$999, 6x9).



Scott Thomas
The Art Deco-inspired Emile round table is made of Macassar Ebony with ivory-colored inlaid veneer accents (\$3,045).



Selva
This elegant lounge chair is part of the Vendome Collection, inspired by 1930s and '40s French design but modernized with contemporary materials and functionality.



Serge de Troyer Collection
This hand-sculpted coffee table is styled like a tree trunk, contemporized with a rich gold body and mirrored top (\$6,250).



Shadow Mountain
Pine and coconut wood are used to create the uber-rustic magazine chest, measuring 26 inches tall.



Shaw Living
The Asher rug from the Newport Collection bridges the past and present by fusing classic earth tones with varied patchwork design, machine-woven in the United States of olefin.



Source Outdoor
Espresso-colored Dura Weave and a white poly upholstered seat give a contemporary edge to this outdoor-friendly loveseat (\$899).



Stein World
The Urban Natural accent chest is made of poplar and pine veneers and features louvered drawer fronts and a faded gray driftwood finish.

Stone County Ironworks

The Rushton side chair, designed by Andy Baker, displays a hand-forged iron and copper construction with a leather seat (\$908).



Summer Classics
Named after the Spanish word for wind, the Viento chair is a blend of tubular cast aluminum and woven resin and is available in two finishes.



Surya
Surya expands its Jill Rosenwald Collection with the addition of Zuna, a series of 100% wool, hand-tufted rugs with hard-twist texture and hand-carving details to elevate the simple style of the designs (\$530, 5x8).



Tapestries Ltd.
Italian engraver Filippo Arena's botanicals are reinterpreted in this horizontal tapestry with a single stalk and its blossoms colored to create vibrant drama (\$318).



Tara Shaw Maison
European tabletop elegance reigns in the French grande cloche and platter with a detailed petite handle gracing the cloche (\$370, cloche; \$325, platter).



Terra
Made for indoor or outdoor use, the Veranda club chair is constructed with powdercoated tubular aluminum frames (\$2,765).



Textillery Weavers
A hand-woven bamboo-cotton blend throw is from the Indiana Citrus Collection (\$245).



Three Hands
The hourglass body of this metal stool receives a heaping helping of intricacy as lines abound in this monochromatic design (\$50).



Tozai Home
A scene of birds interspersed in wild flowers gets the bronzed treatment, creating an exquisite image on this white vase.

Tracy Krohn Designs

This stool's four sharply curved legs hint at modern design inspiration while nailhead details around the seat hearken back to more classical design.



Trade Winds Furniture
The Soho café table's subtle shape and size makes it versatile, suitable for contemporary and traditional settings, available in 14 finish options.



Trans-Ocean
Designed by Liora Manné, the Tropez Collection updates plaid, shown in seafoam colorway, in a polypropylene construction Wilton woven in Turkey (\$200, 5x8).



Treemasters
The Heaven Scent Magnolias arrangement from the Just Cut Natural Collection features white magnolias in a vase with faux water and river pebbles at the bottom (\$400).



Turning House Furniture
Made from reclaimed maple, walnut and pine in a nutmeg finish, the Amalie striped door chest is part of the Summer House Collection (\$799).

Twin-Star International

Valera, a modern-styled media console, features a smoked tempered glass top and matching center shelf on an engineered dark gray pine body with black and silver metal finish.





Uttermost
Each Canal View I & II is hand-painted on canvas that is stretched and mounted before a textured finish is applied.



Villa Home Collection
The Chiara linen pillow with velvet appliqué from the Villa Utilitarian Garden Collection features olive green flowers on a cream background (\$119).



W. King Ambler
Inspired by original antiques and the rich hues of the deep ocean, the Sea Life print depicts a tree of coral in a deep teal (\$400).



Woodbridge Furniture Co.
The West Indies hunt table from the Caribbean Classics Collection interprets a 19th century antique hunt board from the island of St. Croix, made from various hardwood solids and mahogany veneer (\$1,950).



Worlds Away
The Grace coffee table serves up luxurious design with a silver leaf body and white marble top, also available with a gold leaf body (\$1,975).



V Rugs and Home
The Valery Collection, made of quilted velvet over hemp, displays a 1960s mod design and is available in 24 colorways (\$200 to \$280).



Visual Comfort & Co.
Da Vinci styling in charcoal-finished metal lends an Old World exploration motif to the Fecioli pendant with its globe-shaped body and bronze spherical core.



Wildwood
New from the Tommy Bahama Collection, the Gemini lamp features an Italian ceramic sculpture body topped with a shade of ivory silkura.



Zuo Modern
The Discovery coffee table is shaped from a single piece of bent semi-tempered glass (\$717).

STONE COUNTY IRONWORKS
America's Blacksmith Shop
stonecountyironworks.com

Home Accents | Fireplace | Lighting | Furniture

High Point | Suites at Market Square G-7013
p: 800.293.4122 | 1.670.289.5557 | sales@stonecountyironworks.com

Imagination Mirrors

Increases your profit with

REDUCED
Freight Cost

P: 909-460-6482
E: sales@imaginationmirrors.com
www.imaginationmirrors.com

Phylum Design INTRODUCES

OWEN MORTENSEN

Celebrate our debut of wall decor with a daily lunch party from noon-3:00pm. Chef-prepared hors d'oeuvres from fresh, local fare.

SALON G-7057

High Point Market / Oct. 22 - 27 / Suites at Market Square
435.881.0796 / OWENMORTENSEN.COM

FLAMBEAU
Lighting...New Orleans Style

Beautiful Jewelry for your Home

SHOWPLACE 1310
800.407.9000
flambeaulighting.com
facebook.com/flambeaulighting